

CERTIFICATE OF LOCATION OF GOVERNMENT CORNER

WEST 1/4 Corner of Section 20, Township 106, Range 42, 5TH P.M.

STATE OF MINNESOTA, County of MURRAY

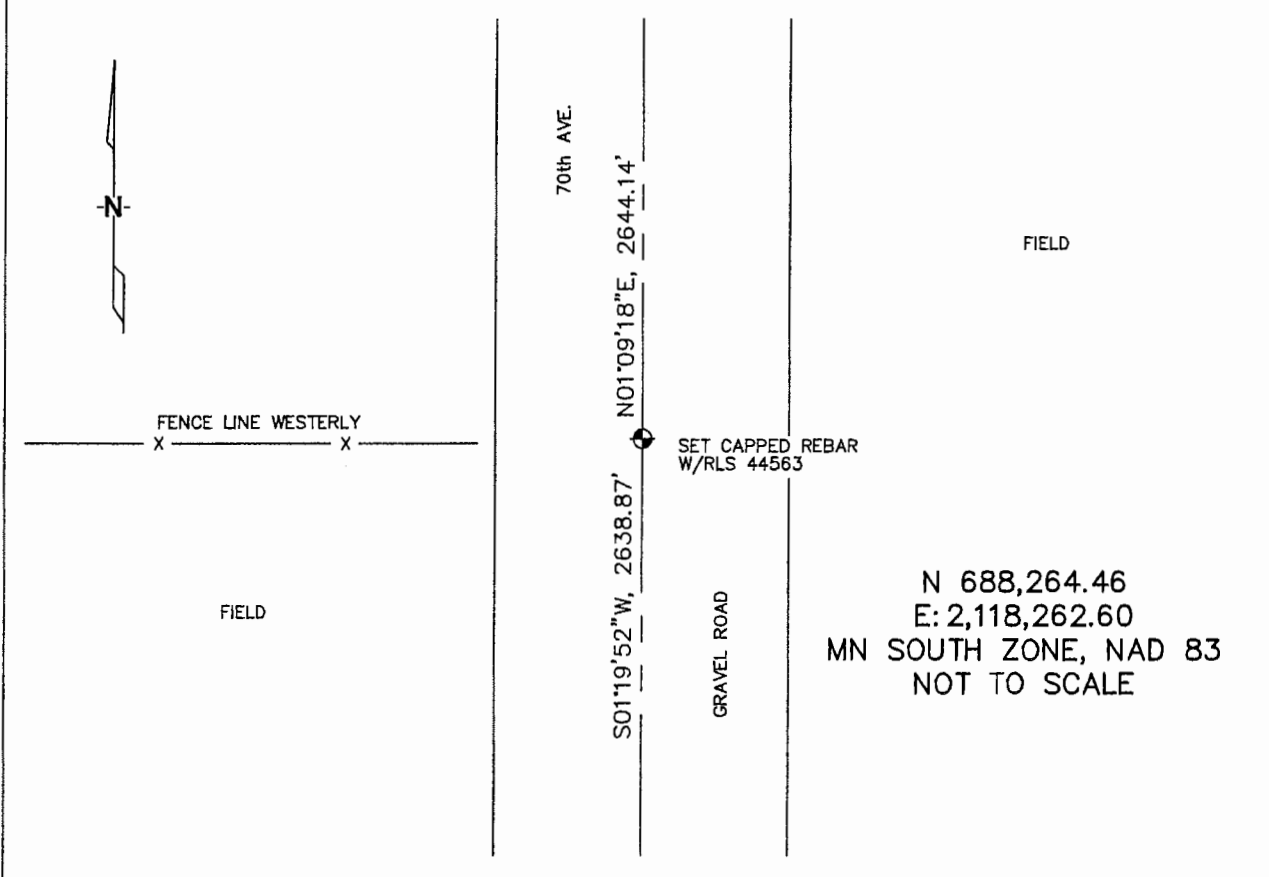
At the corner location shown on the sketch :

On _____ found _____

left monument as found, lowered monument, removed monument (explain)

On 3/21/2006 set 5/8" REBAR W/CAP: RLS 44563, IN GRAVEL ROAD, OPPOSITE FENCE LINE RUNNING WEST.

Sketch of reference ties



Statement of evidence relative to this corner location is on back page

I hereby certify that this document and the data contained herein was prepared by me or under my direct supervision.

Thomas V. Zeff
Signature 6/29/06
Date

Registration No. 44563

- Land Surveyor, Professional Engineer
- County Surveyor, County Engineer

OFFICE OF THE COUNTY RECORDER

County of _____

SEP 28 2006

I hereby certify that this document was filed in the Co. Recorders office at _____ M. on the day of _____ A.D., 20

County Recorder James V. Johnson
By _____, Deputy

DOCUMENT NO. _____

STATEMENT OF EVIDENCE:

WEST 1/4 CORNER, SECTION 20, T. 106 N., R. 42 W.,
MURRAY COUNTY, MINNESOTA

- 1866 J.W. Bishop, US. Deputy Surveyor, monumented corner.
- 3/21/2006 Ulteig Engineers, Inc., Survey Crew, Brian Payne Party Chief,
found nothing. Set a 5/8" rebar with cap: RLS 44563,
opposite a fence line running west.
Ties: N-2644.14' to NW corner, Section 20;
S-2638.87' to SW corner, Section 20.